

ICAO – INSTRUMENT APPROACH CHART

ALGERO/ FERTILIA
NDB+DME RWY 02

REMARKS:
1. Due to not lighted obstacles close to the THR penetrating Annex 14 approach surface, PAPI is compulsory. PAPI OCS not affected by the above obstacles.
2. Final approach track 020° is offset 4'13" from RCL.

APP Alghero Approach
128.55

TWR Alghero Tower
118.85

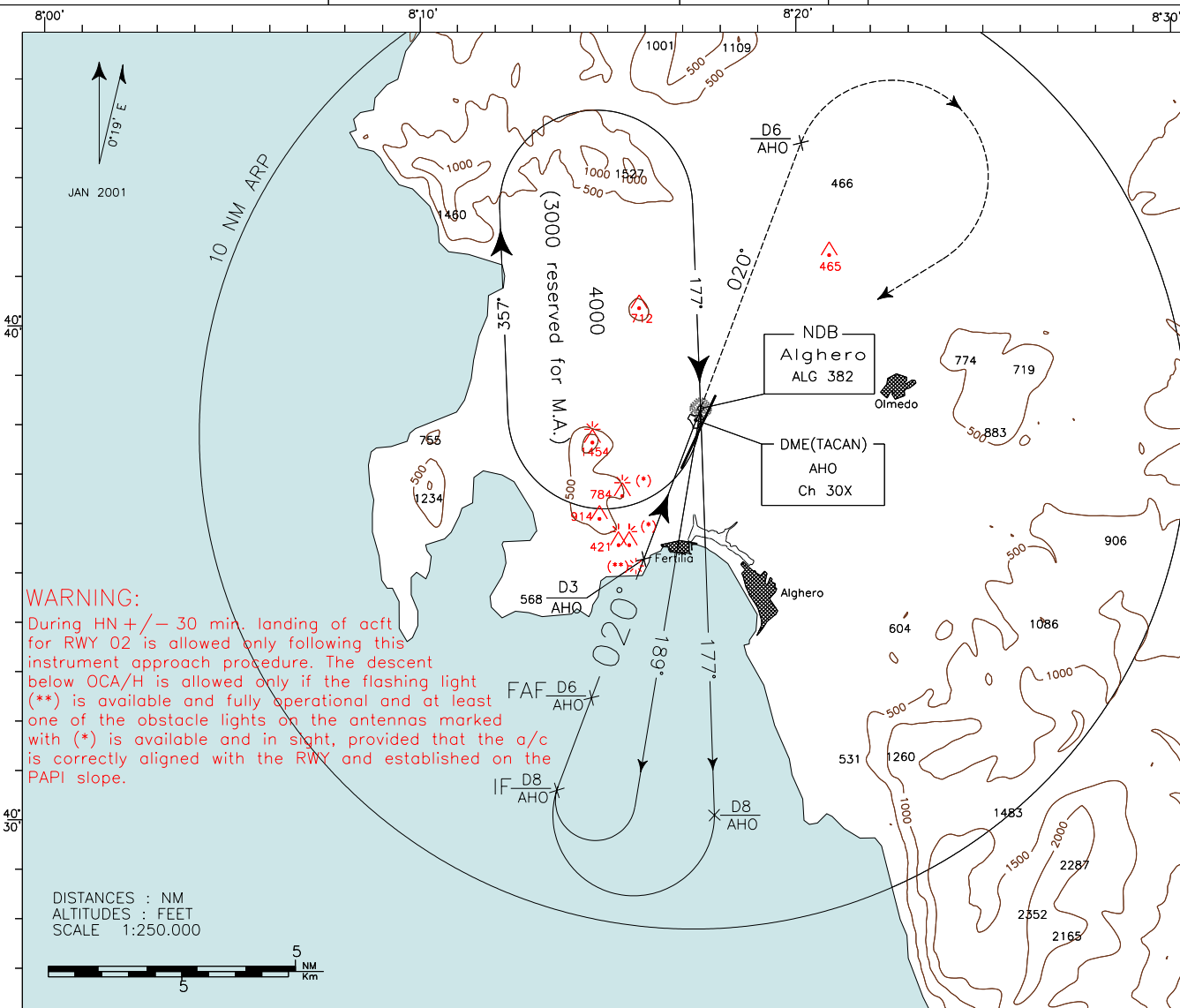
AD ELEV

87

L
E
A

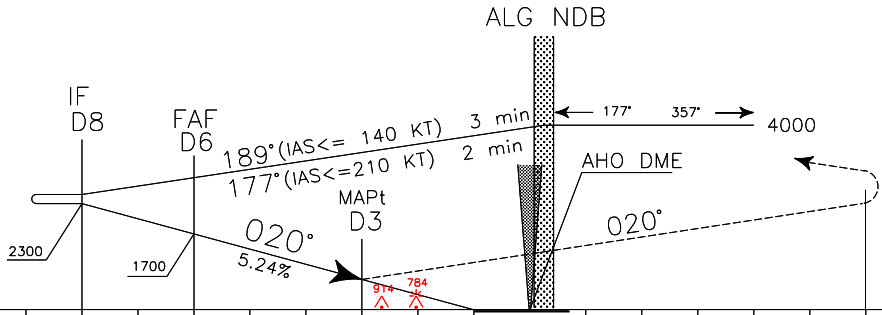
DOC 8168 ED 4 - 1993 AMD 10

CHANGE: NEW RWY IDENTIFICATION.



TRANSITION ALT 5000
MISSED APPROACH:
Proceed on track 020° climbing to 3000 ft. At 6 NM AHO DME turn right (IAS ≤ 200 KT) to ALG NDB to be reached at 3000 ft.

GR = 5.24%



DME AHO	16	15	14	13	12	11	10	9	8	7	6	5	4	3	2	1	0	1	2	3	4	5	6	7
NM	15	14	13	12	11	10	9	8	7	6	5	4	3	2	1	0	1	2	3	4	5	6	7	8

OCA(OCH)		A	B	C	D
NDB + DME		1100 (1031)			
STRAIGHT IN APPROACH	This procedure can be performed with the following meteorological minima: - ceiling 1500 ft or above; - ground visibility not less than 5 Km; - flight visibility not less than 5 Km by day and 8 Km by night				
	CIRCLING	1100 (1013)		1200 (1113)	

WARNING:
CIRCLING ALLOWED ONLY EAST OF THE RWY. CIRCLING FOR RWY 02 IS FORBIDDEN DURING HN +/- 30 MIN.

NOT ALLOWED

GS	FT PER MIN	FAF-MAPt		MAPt-THR		DME AHO	ALT (HGT)	
		3 NM	1.99 NM				ALG	NDB
80	424	2 : 15	1 : 30	8	2300 (2231)			
100	530	1 : 48	1 : 12	7	2000 (1931)			
120	636	1 : 30	1 : 00	6	1700 (1631)			
140	742	1 : 17	0 : 51	5	1385 (1316)			
160	848	1 : 08	0 : 45	4	1065 (996)			
180	954	1 : 00	0 : 40	3	750 (681)			
				2	430 (361)			

