

ICAO - INSTRUMENT APPROACH CHART

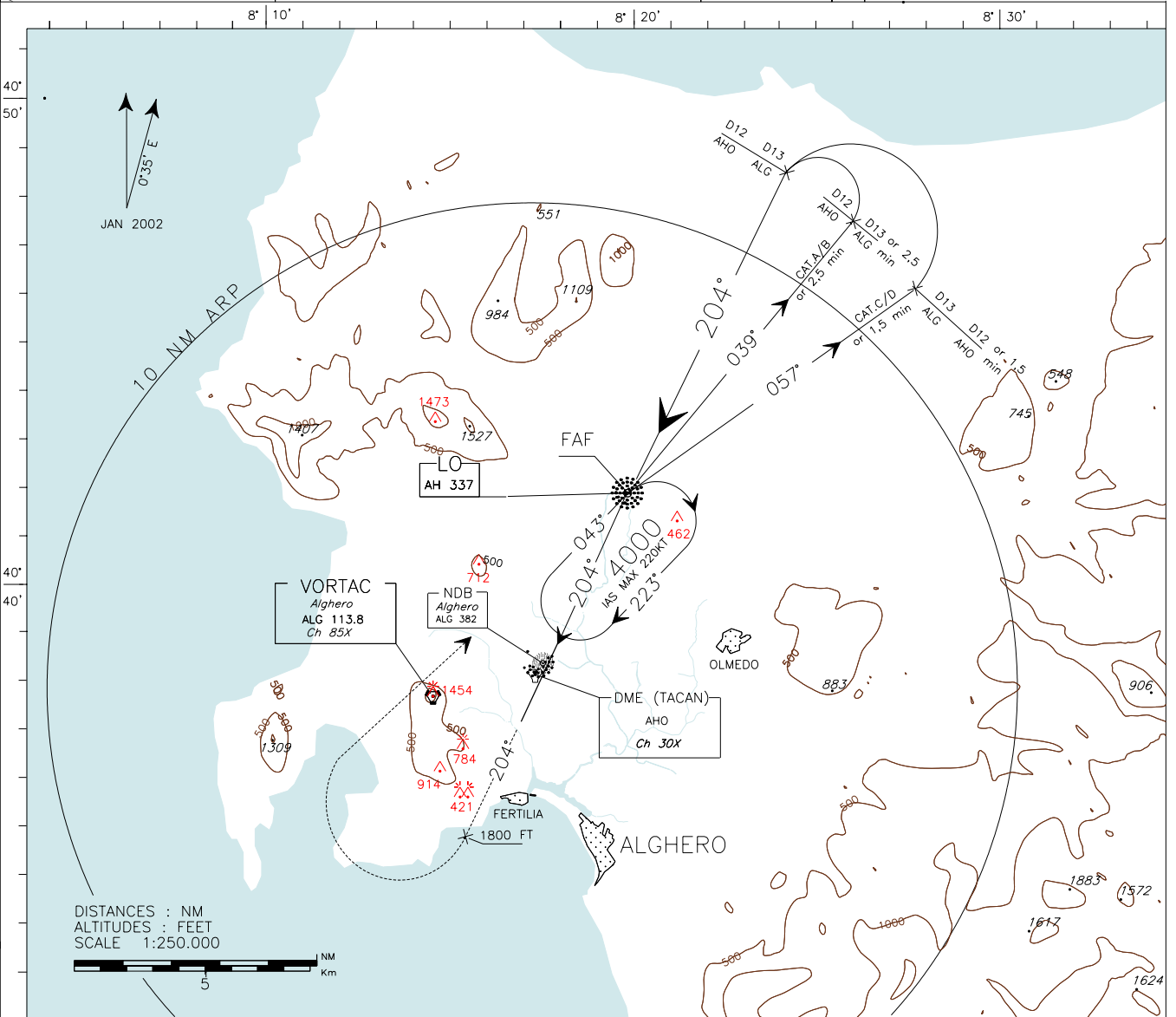
WARNING: During HN ± 30 min circling and landing for RWY02 is forbidden.

APP *Alghero Approach* TWR *Alghero Tower*
128.55 118.85

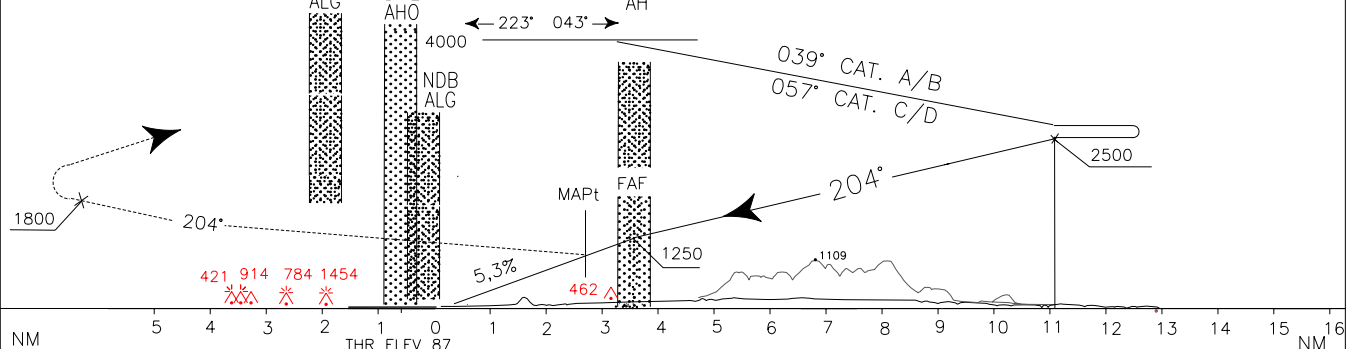
AD ELEV
87

LINE ALGHERO/FERTILIA
LO RWY 20

DOC 8168 ED 4 - - 1993 AMD 10
CHANGE: NEW RWY IDENTIFICATION.



TRANSITION ALT 5000
MISSED APPROACH: Proceed on track 204° climbing to 3000 FT. Passing 1800 FT turn right to AH LO to be reached at 3000 FT. Holding pattern IAS MAX 220KT.



ALG DME 3 4 5 6 7 8 9 10 11 12 13 14 15 16 ALG DME

| OCA(OCH) | | A | B | C | D |
|---------------------------|----|-------------|---|-------------|---|
| STRAIGHT IN APPROACH | LO | 1100 (1013) | | | |
| | | | | | |
| CIRCLING only east of RWY | | 1100 (1013) | | 1200 (1113) | |

WARNING: Due to obstacles not lighted S/W of the A/D circling allowed only strictly EAST of the RWY

| FT PER MIN | GS | FAF-MAPt | |
|------------|-----|----------|--|
| | | 0.87 NM | |
| 430 | 80 | 0 : 39 | |
| 535 | 100 | 0 : 31 | |
| 645 | 120 | 0 : 26 | |
| 750 | 140 | 0 : 22 | |
| 860 | 160 | 0 : 20 | |
| 966 | 180 | 0 : 17 | |

