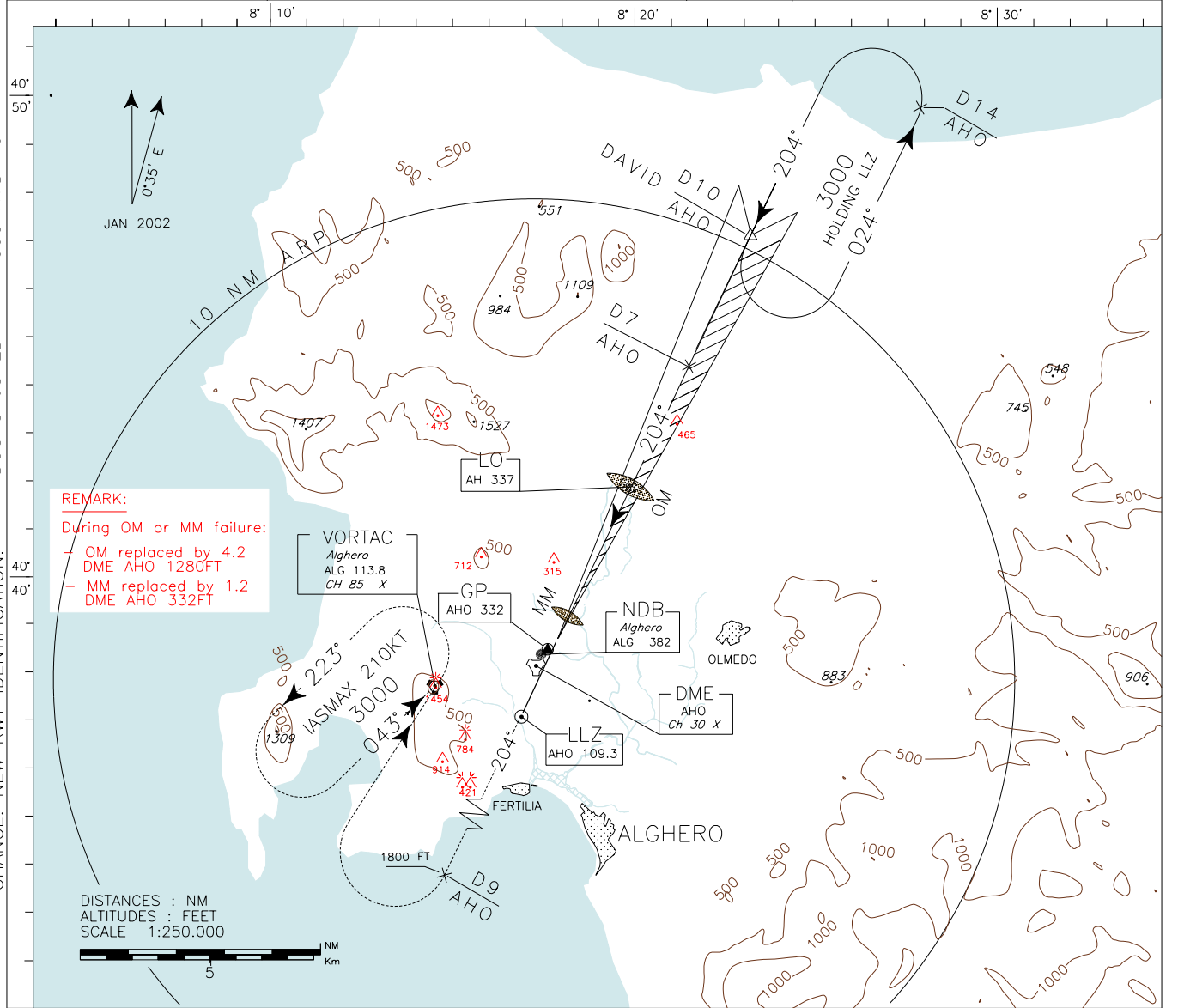


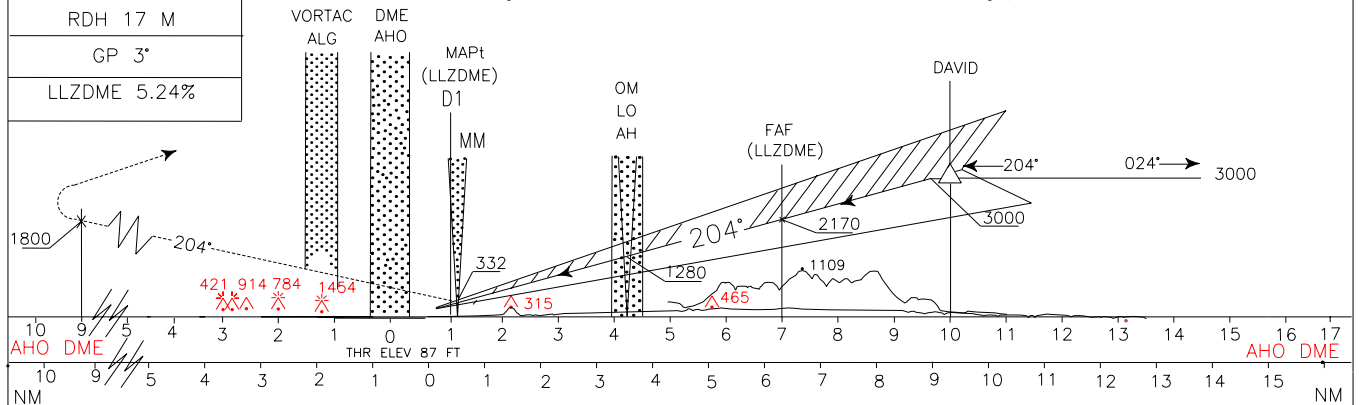
ICAO - INSTRUMENT APPROACH CHART

<p>WARNING: During HN ± 30 min circling and landing for RWY02 is forbidden.</p> <p>WARNING: LLZ signal coverage reduced to 18NM from the station.</p>	APP Alghero Approach	TWR Alghero Tower	AD ELEV	LINE A	ALGERO/FERTILIA
	128.55	118.85	87		AHO

CHANGE: NEW RWY IDENTIFICATION. DOC 8168 ED 4 - 1993 AMD 10



TRANSITION ALT 5000 MISSED APPROACH: Proceed on track 204° climbing to 3000 FT. At 9 DME AHO, to be crossed at 1800 FT or above, turn right to ALG VORTAC to be reached at 3000 FT. Holding pattern IASMAX 210KT.



STRAIGHT IN APPROACH	OCA(OCH)				WARNING: Due to obstacles not lighted S/W of the A/D circling allowed only strictly EAST of the RWY	FT PER MIN	GS	FAF-MAPT 6 NM	MAPT-THR 0.38 NM	THR ALT	ALT (HGT)	MNM SECT ALT VORTAC ALG
	A	B	C	D								
ILS	445(358)	455(368)	465(378)	475(388)		424	80	4 : 30	0 : 17	7	2170 (2083)	
LLZDME	600 (513)					530	100	3 : 36	0 : 14	6	1850 (1763)	
						636	120	3 : 00	0 : 11	5	1535 (1448)	
						742	140	2 : 34	0 : 10	4	1220 (1133)	
						848	160	2 : 15	0 : 09	3	900 (813)	
CIRCLING only east of RWY	700 (613)	900(813)	1200(1113)			954	180	2 : 00	0 : 08	2	580 (493)	