

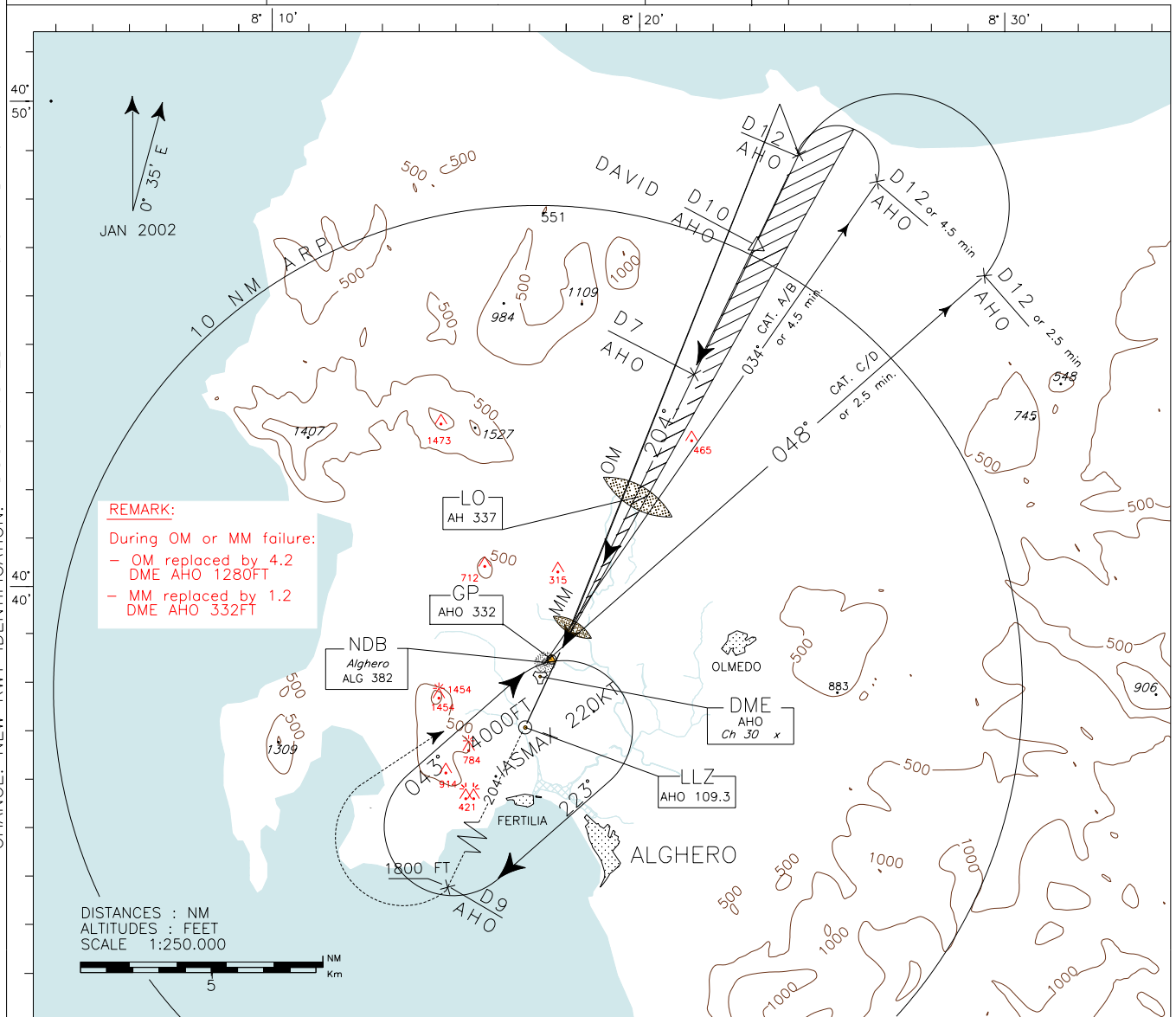
ICAO - INSTRUMENT APPROACH CHART

WARNING: During HN ± 30 min circling and landing for RWY02 is forbidden.
WARNING: LLZ signal coverage reduced to 18NM from the station.

APP *Alghero Approach* TWR *Alghero Tower*
 128.55 118.85

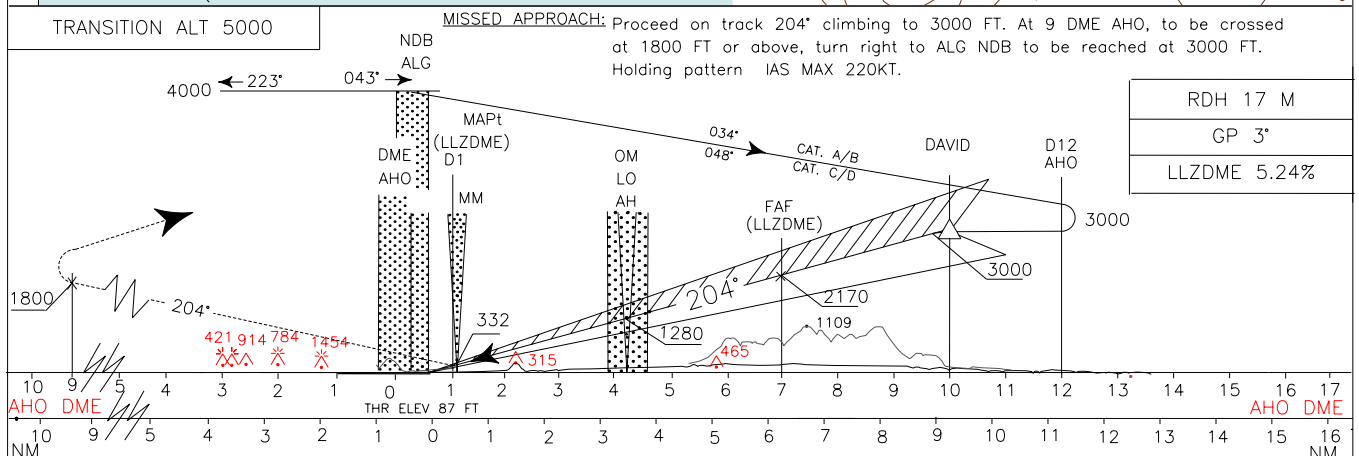
AD ELEV 87
 L I E A
 ALGHERO/FERTILIA
 AHO
 ILS DME-S RWY20

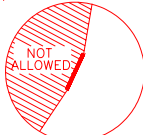
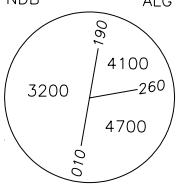
CHANGE: NEW RWY IDENTIFICATION. DOC 8168 ED 4 - 1993 AMD 10



REMARK:
 During OM or MM failure:
 - OM replaced by 4.2 DME AHO 1280FT
 - MM replaced by 1.2 DME AHO 332FT

DISTANCES : NM
 ALTITUDES : FEET
 SCALE 1:250,000



OCA(OCH)		A	B	C	D	WARNING: Due to obstacles not lighted S/W of the A/D circling allowed only strictly EAST of the RWY 	FT PER MIN	GS	FAF-MAPT 6 NM	MAPT-THR 0.38 NM	DME AHO	ALT (HGT)	MNM SECT ALT
STRAIGHT IN APPROACH	ILS	445(358)	455(368)	465(378)	475(388)		424	80	4 : 30	0 : 17	7	2170 (2083)	
	LLZDME	600 (513)					530	100	3 : 36	0 : 14	6	1850 (1763)	
							636	120	3 : 00	0 : 11	5	1535 (1448)	
						742	140	2 : 34	0 : 10	4	1220 (1133)		
CIRCLING only east of RWY		700 (613)	900(813)	1200(1113)		848	160	2 : 15	0 : 09	3	900 (813)		
						954	180	2 : 00	0 : 08	2	580 (493)		