

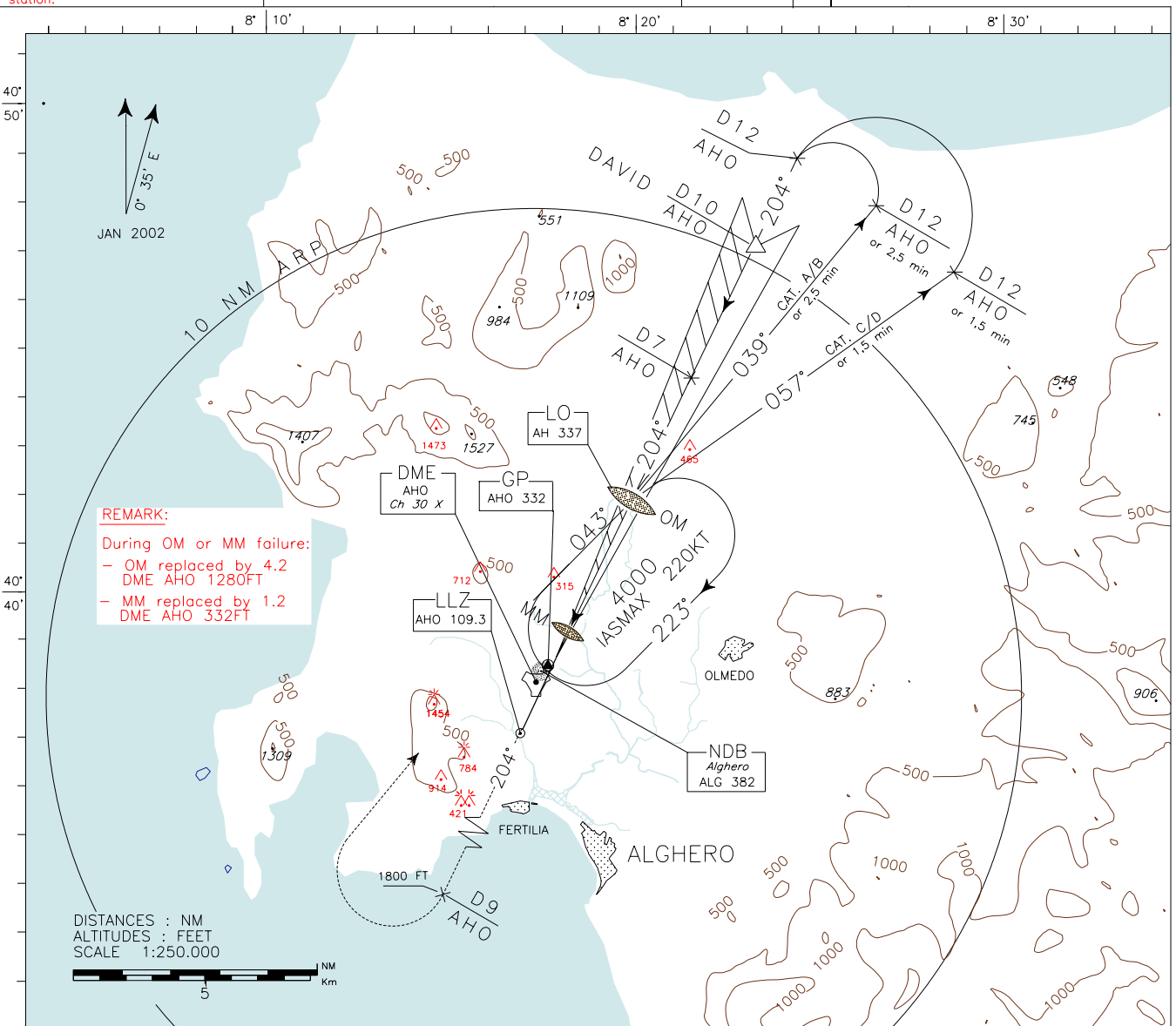
ICAO – INSTRUMENT APPROACH CHART

**WARNING:** During HN ± 30 min circling and landing for RWY02 is forbidden.  
**WARNING:** LLZ signal coverage reduced to 18NM from the station.

APP Alghero Approach TWR Alghero Tower  
 128.55 118.85

AD ELEV 87  
 L I E A  
 ALGHERO/FERTILIA  
 AHO  
 ILS DME-T RWY20

CHANGE: NEW RWY IDENTIFICATION.

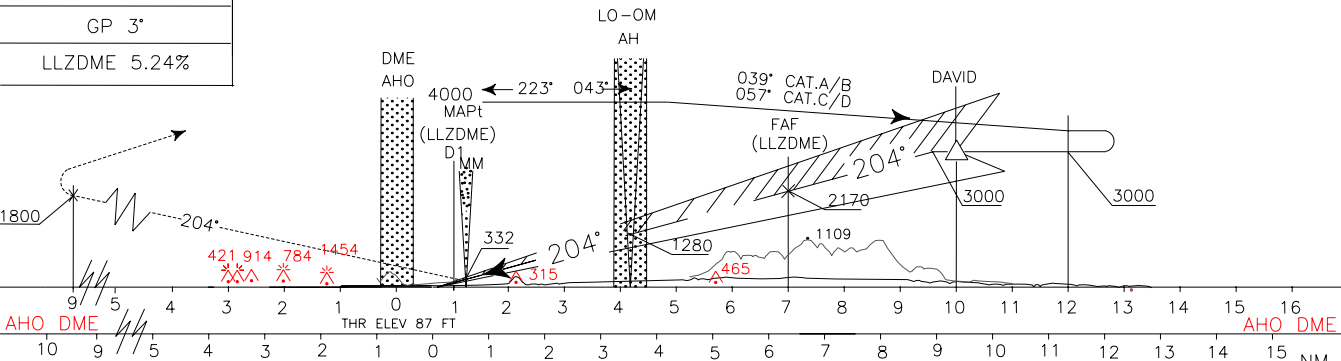


**REMARK:**  
 During OM or MM failure:  
 - OM replaced by 4.2 DME AHO 1280FT  
 - MM replaced by 1.2 DME AHO 332FT

TRANSITION ALT 5000

**MISSED APPROACH:** Proceed on track 204° climbing to 3000 FT. At 9 DME AHO, to be crossed at 1800 FT or above, turn right to AH LO to be reached at 3000 FT. Holding pattern IAS MAX 220KT.

RDH 17 M  
 GP 3°  
 LLZDME 5.24%



OCA(OCH)		A	B	C	D
STRAIGHT IN APPROACH	ILS	445(358)	455(368)	465(378)	475(388)
	LLZDME	600 (513)			
CIRCLING only east of RWY		700 (613)	900(813)	1200(1113)	

**WARNING:**  
 Due to obstacles not lighted S/W of the A/D circling allowed only strictly EAST of the RWY

NOT ALLOWED

FT PER MIN	GS	FAF-MAPT 6 NM	MAPT-THR 0.38 NM	THR DME	ALT (HGT)
424	80	4 : 30	0 : 17	7	2170 (2083)
530	100	3 : 36	0 : 14	6	1850 (1763)
636	120	3 : 00	0 : 11	5	1535 (1448)
742	140	2 : 34	0 : 10	4	1220 (1133)
848	160	2 : 15	0 : 09	3	900 (813)
954	180	2 : 00	0 : 08	2	580 (493)

