

ICAO — INSTRUMENT APPROACH CHART

WARNING: During HN ± 30 min circling and landing for RWY02 is forbidden.
WARNING: LLZ signal coverage reduced to 18NM from the station.

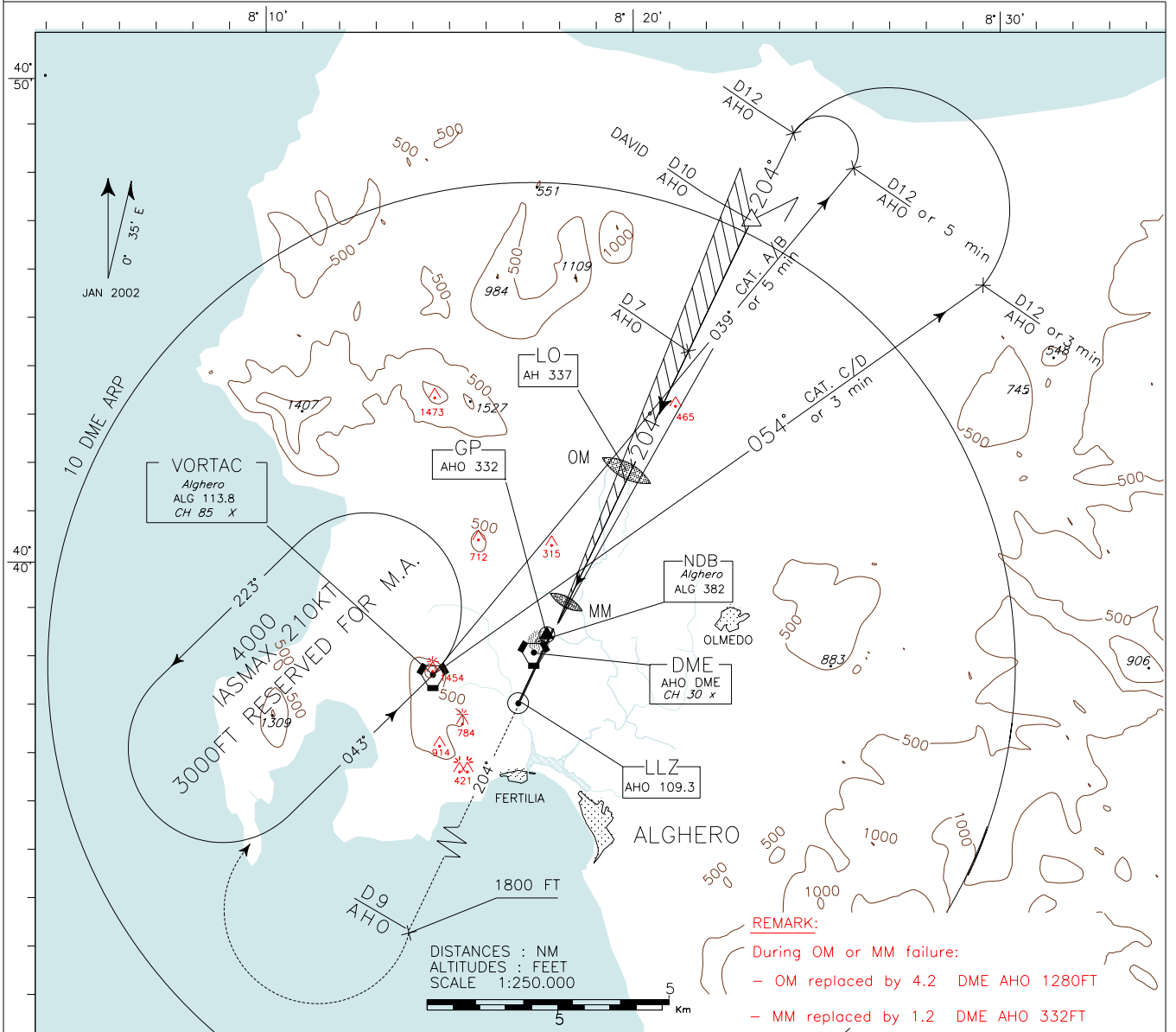
APP Alghero Approach TWR Alghero Tower
 128.55 118.85

AD ELEV
 87

LINEA

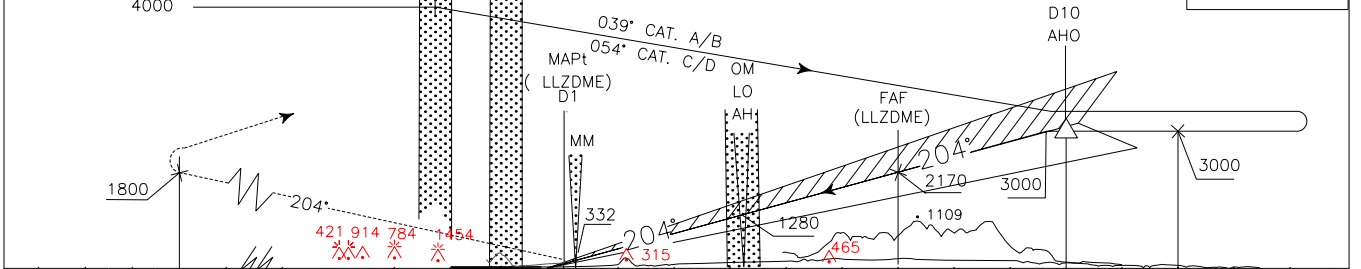
ALGHERO/FERTILIA
AHO
 ILS DME-Q RWY 20

DOC 8168 ED 4 — 1993 AMD 10
 CHANGE: NEW RWY IDENTIFICATION.



REMARK:
 During OM or MM failure:
 - OM replaced by 4.2 DME AHO 1280FT
 - MM replaced by 1.2 DME AHO 332FT

TRANSITION ALT 5000
 VOR TAC ALG
 TAC MISSED APPROACH: Proceed on track 204° climbing to 3000 Ft. At 9 DME AHO, to be crossed at 1800 Ft or above, turn right to ALG VORTAC to be reached at 3000 Ft. Holding pattern IAS MAX 210KT.
 RDH 17 M
 GP 3°
 LLZDME 5.24%



AHO DME THR ELEV 87 AHO DME

OCA(OCH)		A	B	C	D
STRAIGHT IN APPROACH	ILS	445(358)	455(368)	465(378)	475(388)
	LLZDME	600 (513)			
CIRCLING only east of RWY		700 (613)	900(813)	1200(1113)	

WARNING:
 Due to obstacles not lighted S/W of the A/D circling allowed only strictly EAST of the RWY

FT PER MIN	GS	FAF-MAPT 6 NM	MAPT-THR 0.38 NM	THR DME (NM)	ALT (HGT)
424	80	4 : 30	0 : 17	7	2170 (2083)
530	100	3 : 36	0 : 14	6	1850 (1763)
636	120	3 : 00	0 : 11	5	1535 (1448)
742	140	2 : 34	0 : 10	4	1220 (1133)
848	160	2 : 15	0 : 09	3	900 (813)
954	180	2 : 00	0 : 08	2	580 (493)

