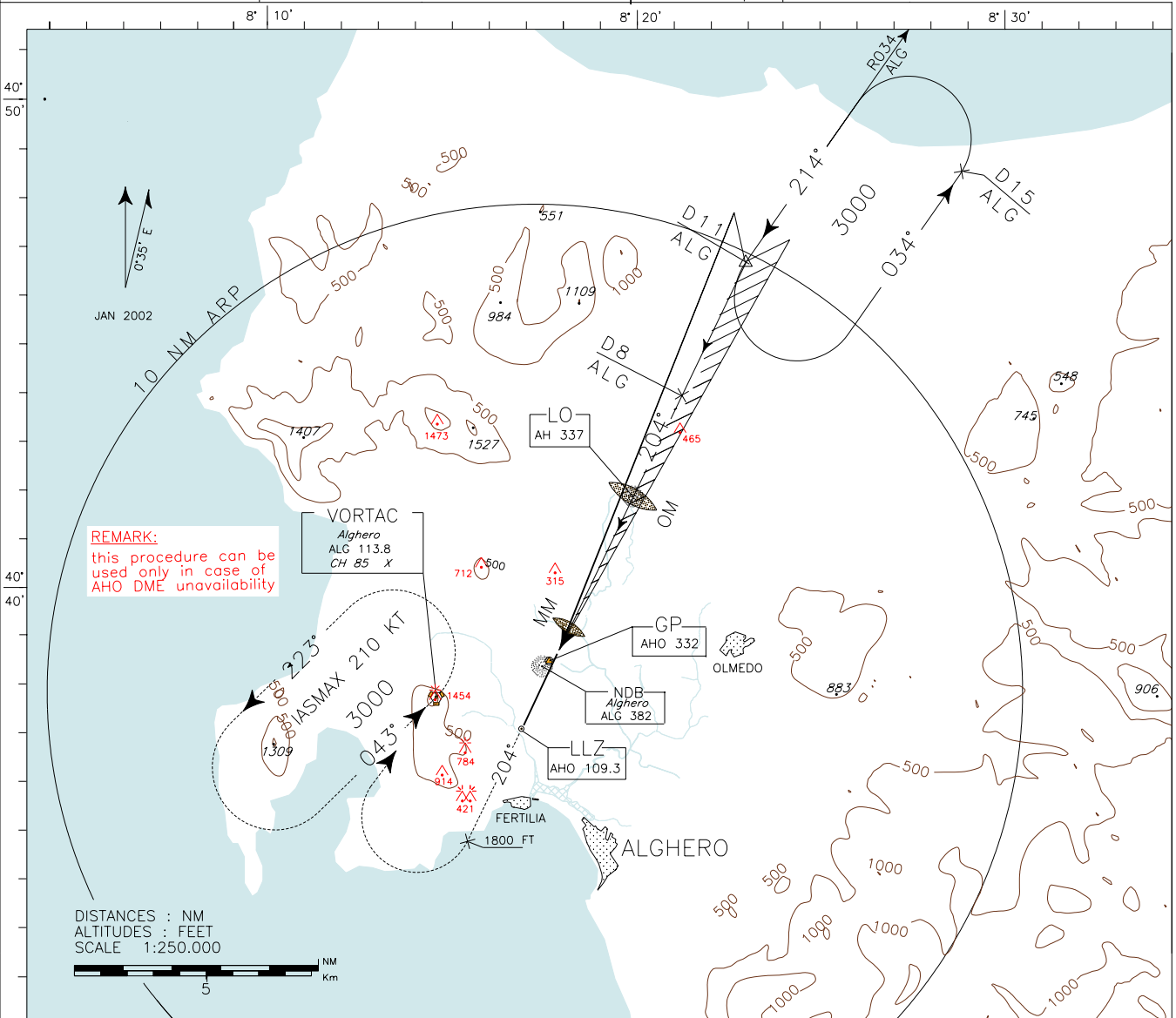


ICAO – INSTRUMENT APPROACH CHART

WARNING: During HN ± 30 min circling and landing for RWY02 is forbidden.
WARNING: LLZ signal coverage reduced to 18NM from the station.

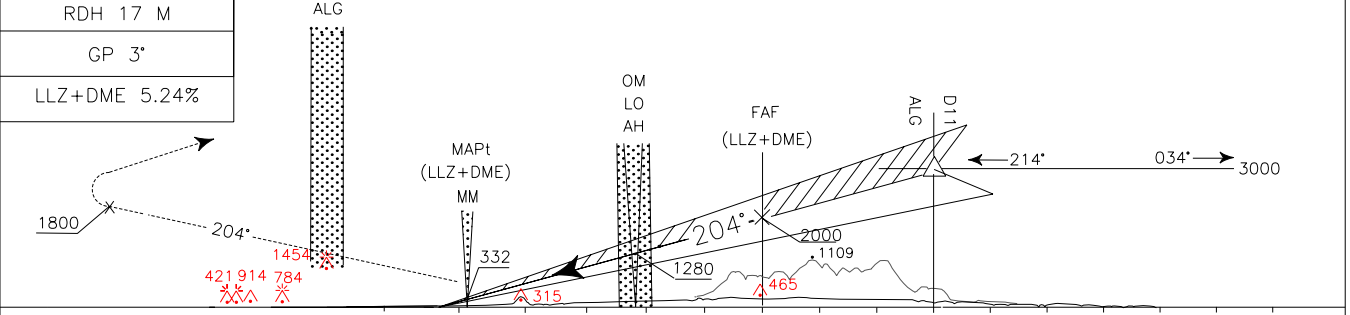
APP Alghero Approach TWR Alghero Tower AD ELEV 87
 128.55 118.85
 L I E A ALGHERO/FERTILIA
 ALG ILS+DME P RWY20

CHANGE: NEW RWY IDENTIFICATION.



TRANSITION ALT 5000
RDH 17 M
GP 3°
LLZ+DME 5.24%

MISSED APPROACH: Proceed on track 204° climbing to 3000 FT. Passing 1800 FT turn right to ALG VORTAC to be reached at 3000 FT. Holding pattern IASMAX 210KT



ALG TAC		THR ELEV 87 FT															ALG TAC										
NM		7	6	5	4	3	2	1	0	1	2	3	4	5	6	7	8	9	10	11	12	13	14	15	16	17	NM

OCA(OCH)		A	B	C	D
STRAIGHT IN APPROACH	ILS	445(358)	455(368)	465(378)	475(388)
	LLZ+DME	600 (513)			
CIRCLING only east of RWY		700 (613)	900(813)	1200(1113)	

WARNING:
 Due to obstacles not lighted S/W of the A/D circling allowed only strictly EAST of the RWY

NOT ALLOWED

FT PER MIN	GS	FAF-MAPT	MAPt-THR	THR	ALT (HGT)
425	80	3 : 57	0 : 27	8	2000 (1913)
531	100	3 : 10	0 : 21	7	1670 (1583)
637	120	2 : 38	0 : 18	6	1340 (1253)
743	140	2 : 16	0 : 15	5	1000 (913)
849	160	1 : 59	0 : 13	4	650 (563)
955	180	1 : 45	0 : 12	3	277(190)

