

ICAO - INSTRUMENT APPROACH CHART

**WARNING:** During HN ± 30 min circling and landing for RWY02 is forbidden.  
**WARNING:** LLZ signal coverage reduced to 18NM from the station.

APP *Alghero Approach* TWR *Alghero Tower*  
 128.55 118.85

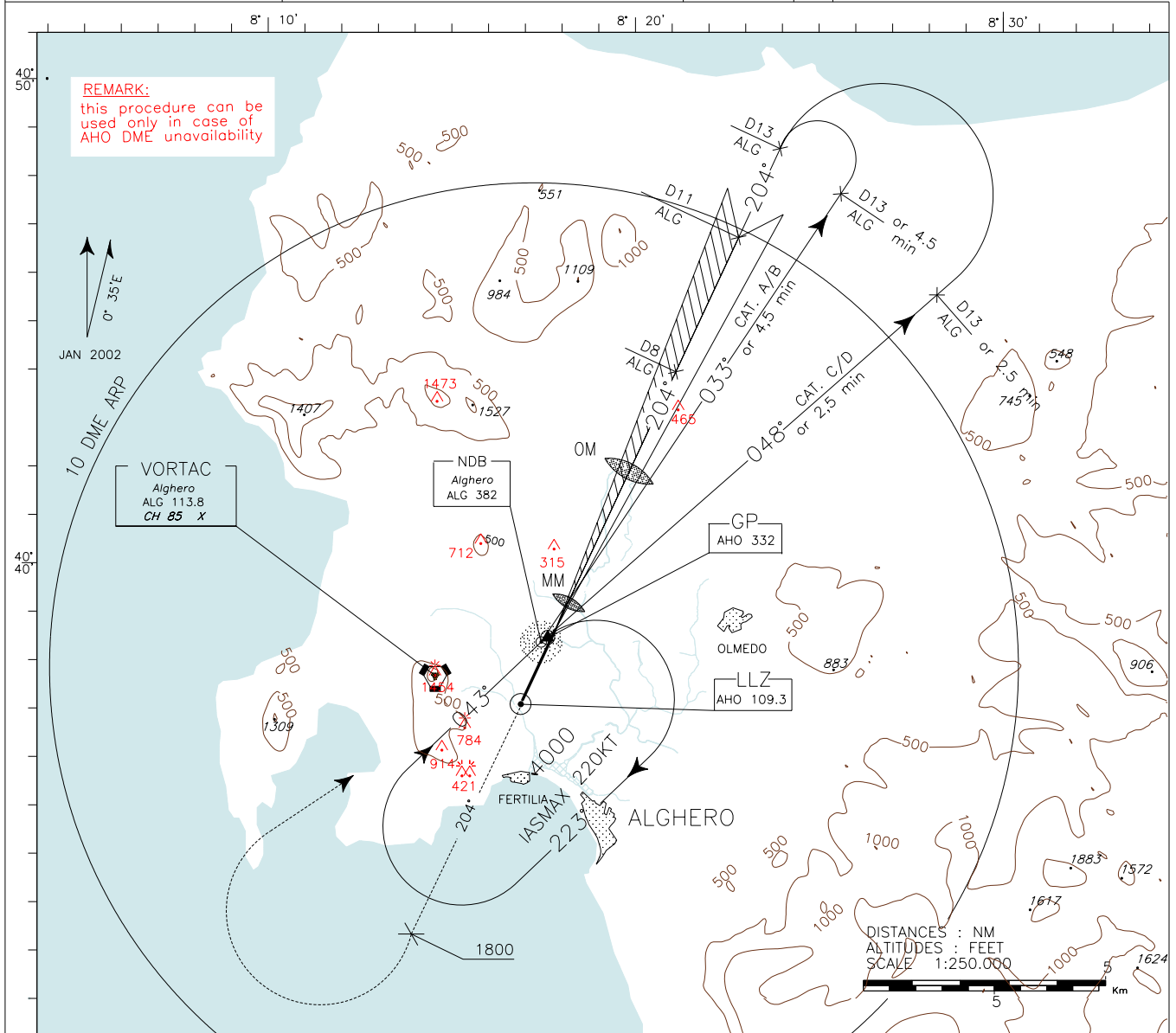
AD ELEV 87

L  
E  
A

ALGHERO/FERTILIA  
 ALG  
 ILS+DME S RWY20

DOC 8168 ED 4 - 1993 AMD 10

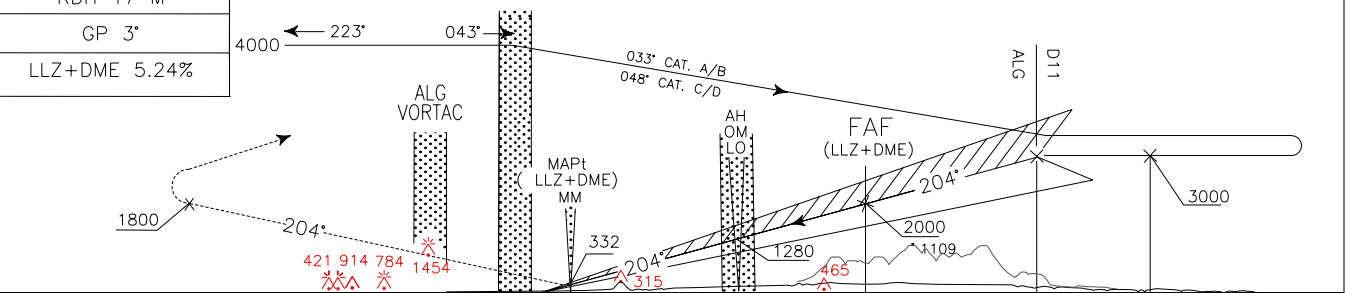
CHANGE: NEW RWY IDENTIFICATION.



TRANSITION ALT 5000

RDH 17 M  
 GP 3°  
 LLZ+DME 5.24%

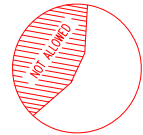
**MISSED APPROACH:** Proceed on track 204° climbing to 3000 FT. Passing 1800 FT turn right to ALG NDB to be reached at 3000 FT. Holding pattern IAS MAX 220KT



ALG TAC THR ELEV 87 ALG TAC

OCA(OCH)		A	B	C	D
STRAIGHT IN APPROACH	ILS	445(358)	455(368)	465(378)	475(388)
	LLZ+DME	600 (513)			
CIRCLING Only east of RWY		700 (613)	900(813)	1200(1113)	

**WARNING:**  
 Due to obstacles not lighted S/W of the A/D, circling allowed only strictly EAST of the RWY



FT PER MIN	GS	FAF-MAPT 5,27 NM	MAPT-THR 0,59NM	THR ALT (HGT)	MNM SECT ALT
425	80	3 : 57	0 : 27	8 2000 (1913)	
531	100	3 : 10	0 : 21	7 1670 (1583)	
637	120	2 : 38	0 : 18	6 1340 (1253)	
743	140	2 : 16	0 : 15	5 1000 (913)	
849	160	1 : 59	0 : 13	4 650 (563)	
955	180	1 : 45	0 : 12	3 277 (190)	

